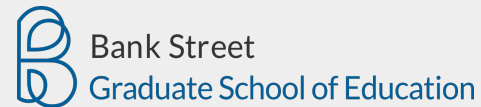




World Café

Creating Meaningful Partnerships and Communities in Teacher Preparation



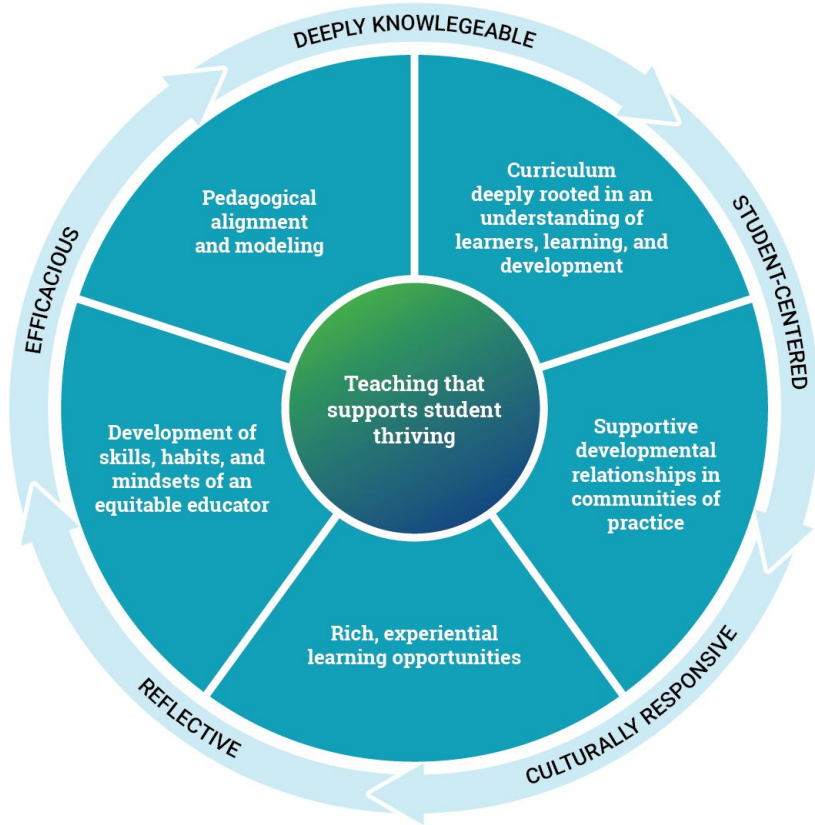
Agenda

- **Welcome and framing of the World Cafe**
- **Provocation: Panelists**
- **Small group discussions**
- **Whole Group Synthesis**
- **Next Steps**
- **Adjourn**

EdPrepLab seeks to transform educator preparation across the US through the alignment of research, practice, and policy.



Science of Learning and Development Design Principles



Moderator



Dr. Xiu Cravens

Program Director, International
Education Policy and Management
Vanderbilt University
Nashville, TN

Session 2 Panelists



Professor Larissa McLean Davies
Deputy Dean, Faculty of Education
University of Melbourne, Australia



Wilisha Scaife
Professional Learning Specialist, Community
Activist
Ball State University, United States



Dr. Eva Zygmunt
Professor of Early Childhood, Youth, and
Family Studies
Ball State University, United States

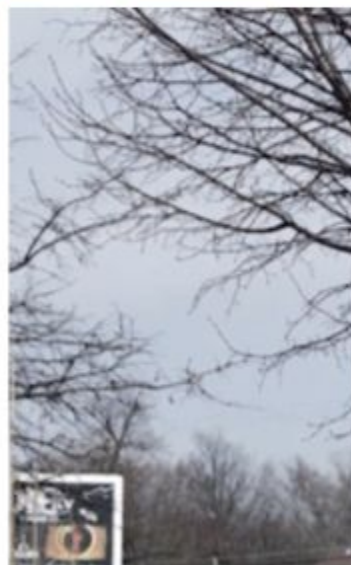
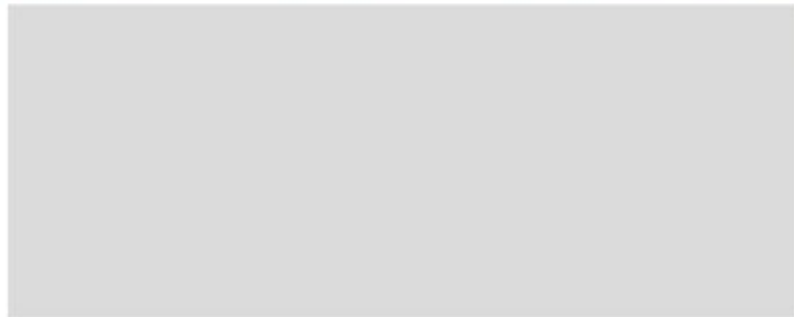
Session 1 Panelists



Professor Nadine Petersen
Executive Dean, Faculty of Education
University of Johannesburg, South Africa



Vinicio Quinteros
Teacher and Academic Interventionist
Newark Public Schools, United States





Categories of Community Cultural Wealth

(Huber, 2006; Yosso, 2005)

- Aspirational Capital
- Familial Capital
- Social Capital
- Linguistic Capital
- Navigational Capital
- Resistance Capital
- Spiritual Capital



Children's Literature and
Community Cultural
Wealth



Creating Meaningful Partnerships and Communities in Teacher Preparation

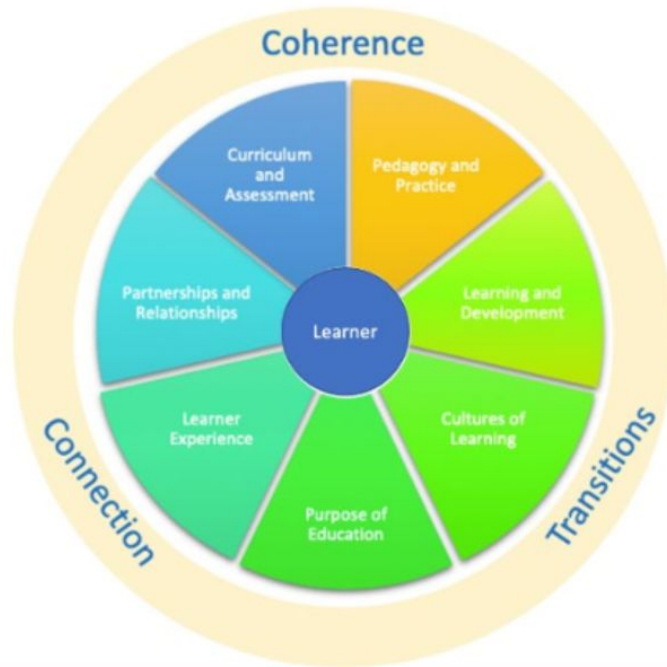


Aerial photos – North-East Arnhem Land, 2023



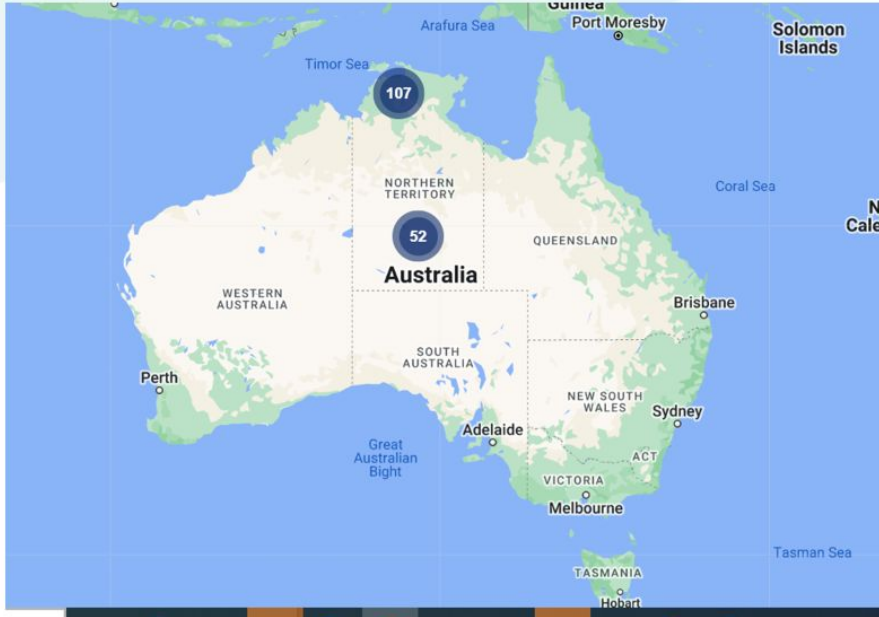
CoLF – informed by desktop analysis

Continuity of Learning Birth to Year 12





The Continuity of Learning Project 2021-2023

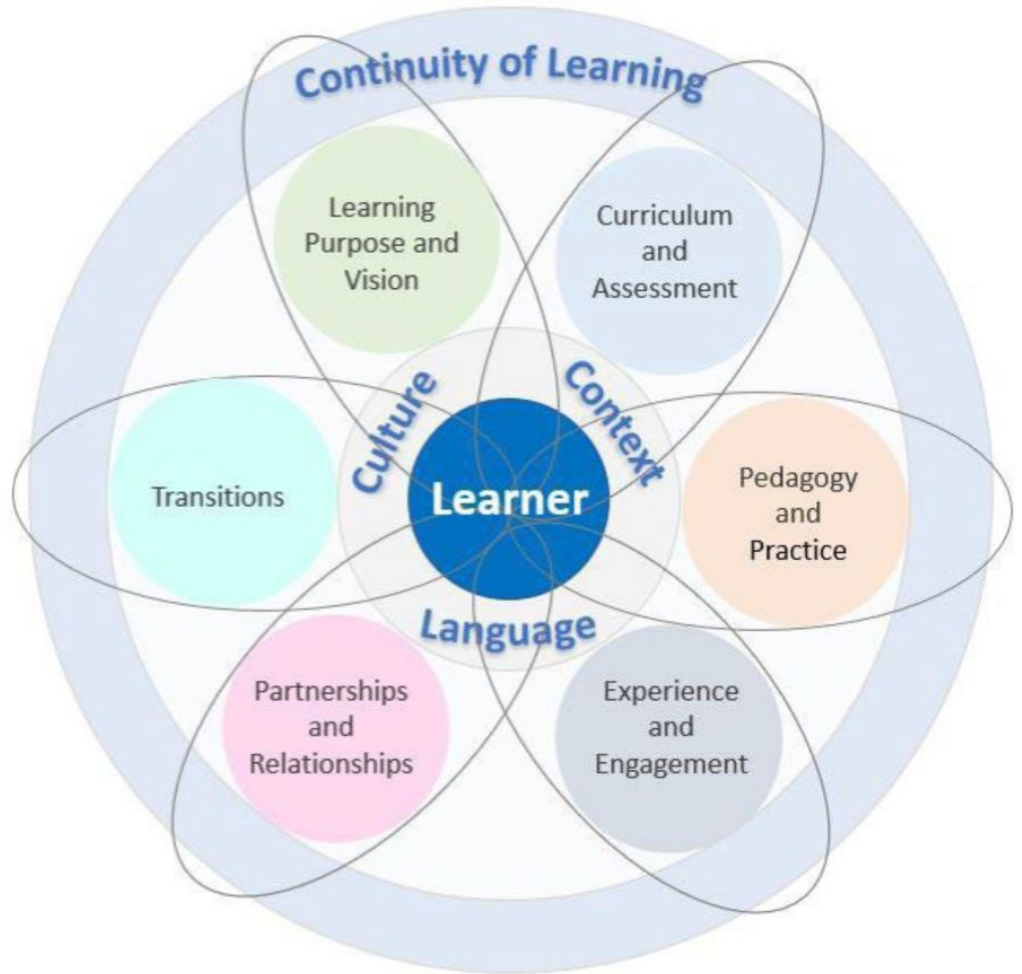


Northern Territory:

- Population: 254,000
- Indigenous population 30% (79,700 people)
- Student population 34,000
- Government schools: 153 spread across 1.35 million square kilometres.
- 71 per cent of schools are located in remote and very remote areas,
- 44 per cent of the total student population attending those remote schools.
- 44 per cent of students speak a language other than English at home.

Recalibrating the CoL Framework – co-design 1

- The Situational Analysis showed that the dimensions within the Continuity of Learning Framework were not independent of each other but intricately connected.





Co-design 2

- Online workshops – NT DET; assistant teachers; school and service leaders, teachers and educators.
- Enabling and core dimensions.

Small Group Discussion Prompt

Consider what you have heard from our panelists, what you have read about the science of learning and development as it relates to Creating Meaningful Partnerships and Communities in Educator Preparation and share some of the **practices that are working** in your teacher education work as well as some of the **challenges you face** when trying to create and sustain these partnerships. What questions do you have for your colleagues in the group?

Whole Group Synthesis

Please complete the Feedback Form

2025 EdPrepLab Events

Tomorrow, February 13, 2025 (US time)

EdPrepLab Annual Policy Summit

March 3, 2025

Syllabus Workshop/Practitioner Inquiry Space

May 15, 2025

World Cafe 4

**Developing the Equitable Educator:
Pre-service and in-service early career support**

Adjourn

Thank you!

Please complete the Feedback Form

If you have any questions/suggestions please reach out to:

Maria Hyler

mhyler@learningpolicyinstitute.org

Misty Sato

misty.sato@canterbury.ac.nz

Session 1 Panelists



Professor Nadine Petersen
Executive Dean, Faculty of Education
University of Johannesburg, South Africa



Vinicio Quinteros
Teacher and Academic Interventionist
Newark Public Schools, United States



Funda Ujabule
021 501 0000

Funda Ujabule School

University of Johannesburg

