

# Building the Teacher Pipeline

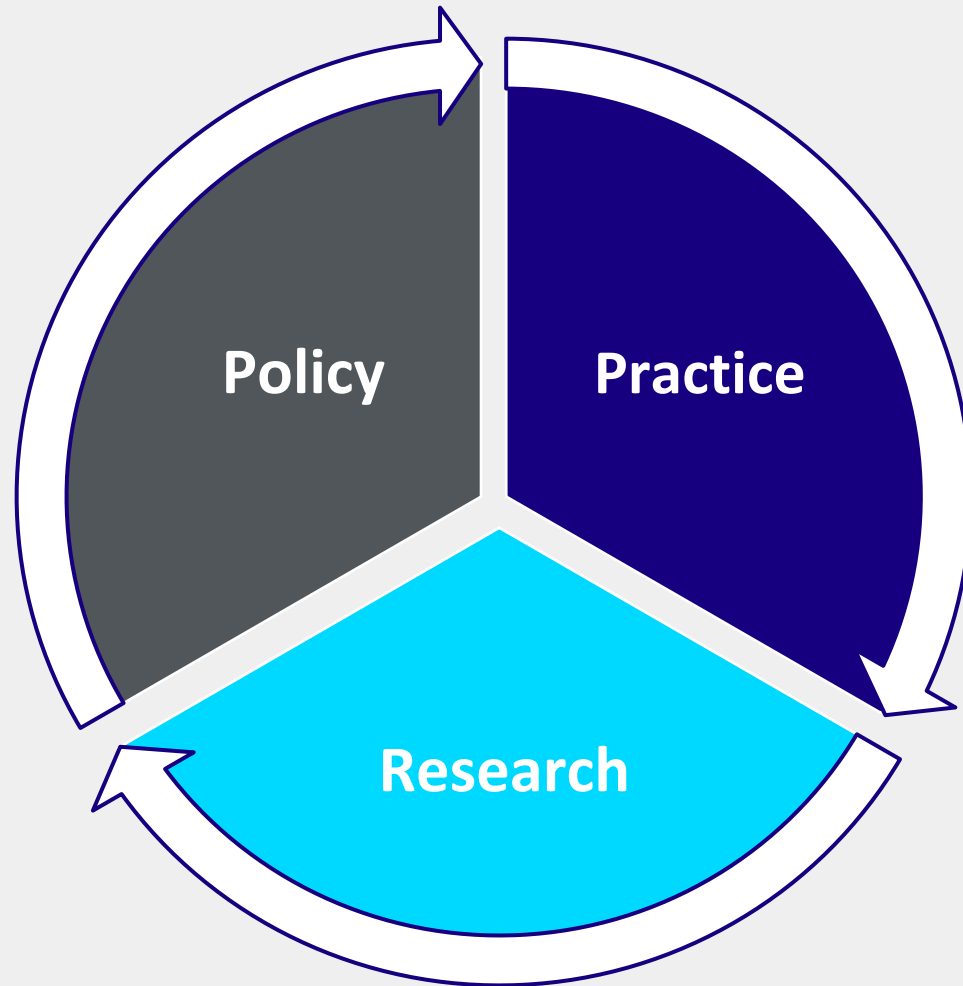
Emerging Models for High-Quality Educator Preparation

THIRD ANNUAL EDPREPLAB POLICY SUMMIT

# Agenda

- Welcome and Introduction
- EdPrepLab presentation
- Panel Discussion
- Summary Remarks
- Q & A
- Upcoming Events and Closing

Visit us online at [edpreplab.org](http://edpreplab.org)



Linda Darling-Hammond  
Jeannie Oakes

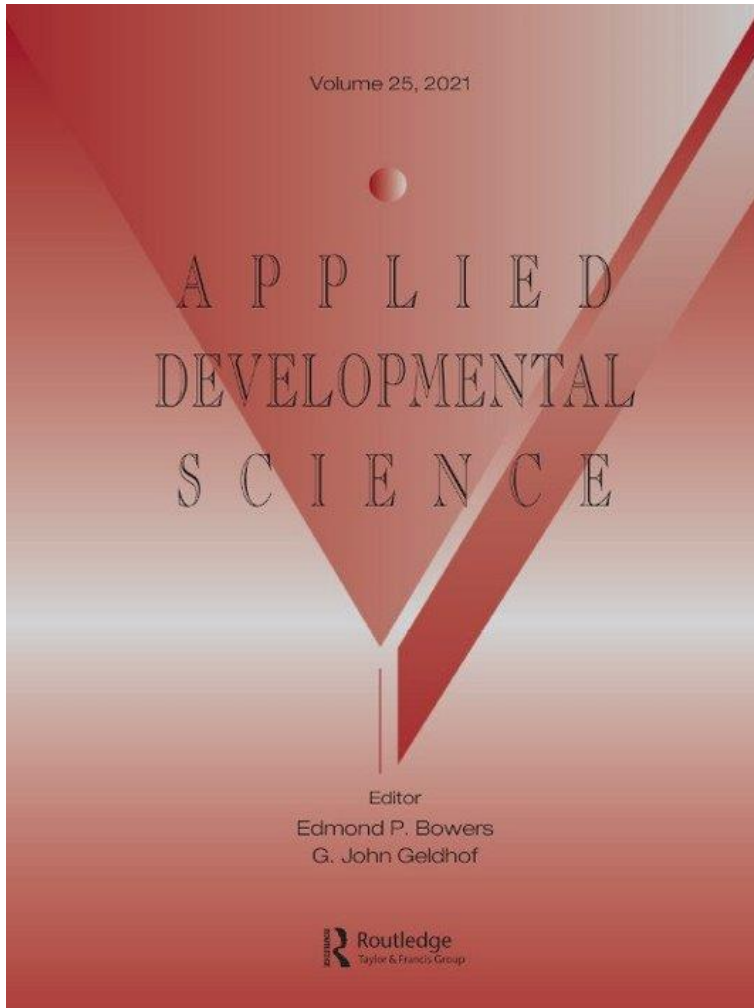


PREPARING  
TEACHERS  
FOR DEEPER  
LEARNING

## **Preparing Leaders for Deeper Learning: Principals for 21st-century Schools**

**Marjorie Wechsler  
Steve Wojcikiewicz  
Julie Adams  
Desiree Carver-Thomas  
Daniel Espinoza  
Madelyn Gardner  
Maria E. Hyler  
Ann Podolsky  
Channa Cook-Harvey**

# The Science of Learning and Development



## **Malleability, plasticity, and individuality: How children learn and develop in context**

Pamela Cantor, David Osher, Juliette Berg, Lily Steyer & Todd Rose

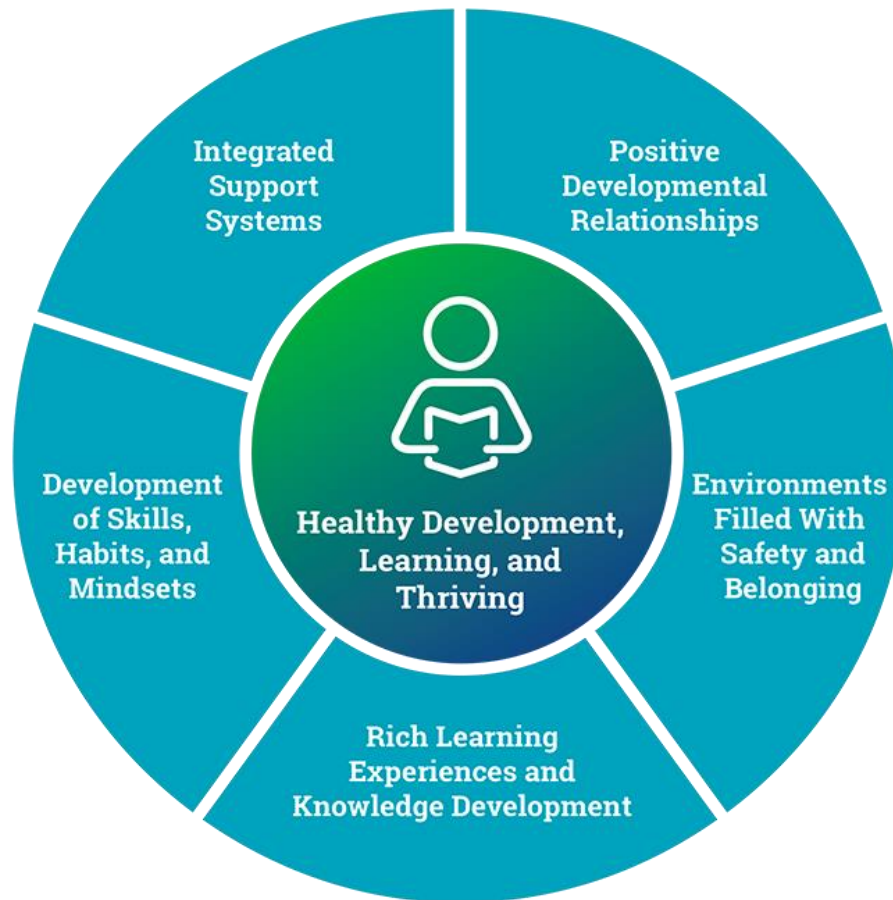
## **Drivers of human development: How relationships and context shape learning and development**

David Osher, Pamela Cantor, Juliette Berg, Lily Steyer & Todd Rose

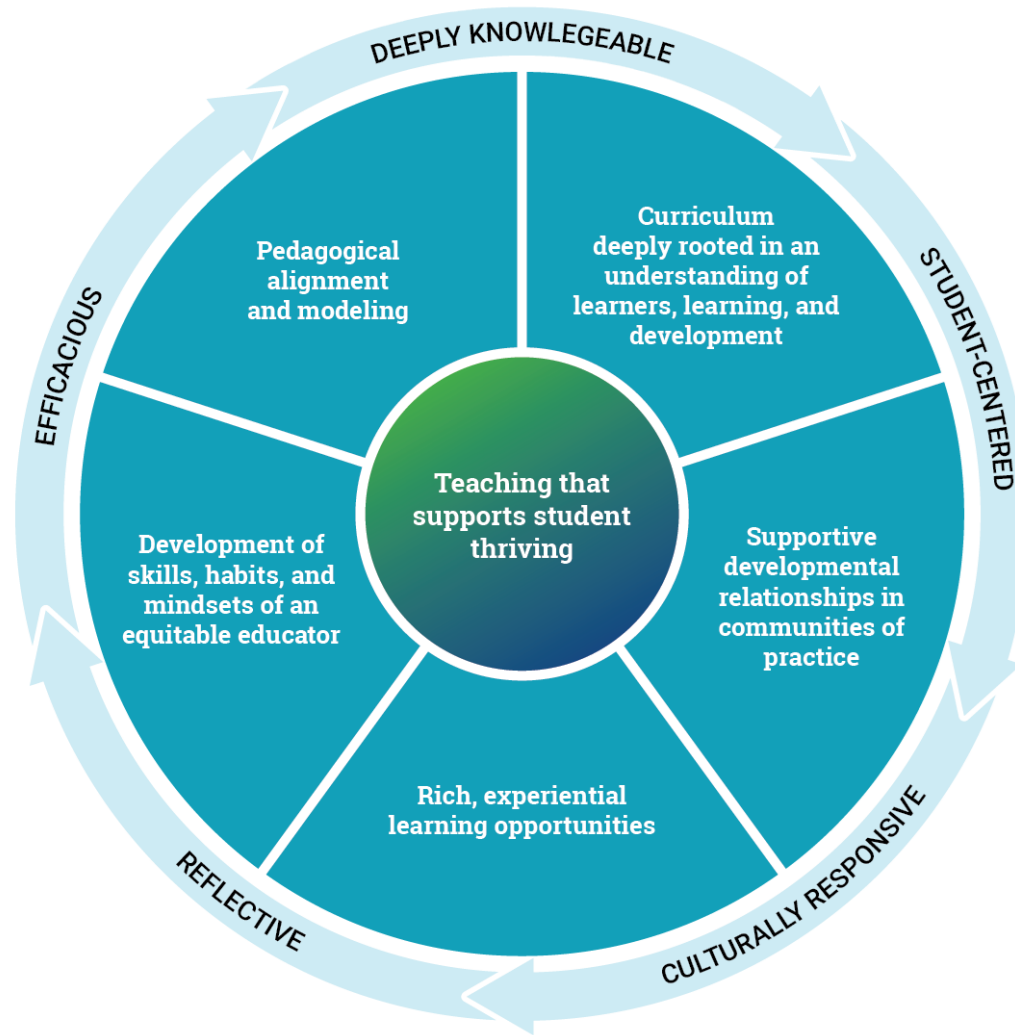
## **Implications for Practice of the Science of Learning and Development**

Linda Darling-Hammond, Lisa Flook, Channa Cook-Harvey, Brigid Barron, & David Osher

# Whole School SoLD Design Principles



# Teacher Preparation SoLD Design Principles

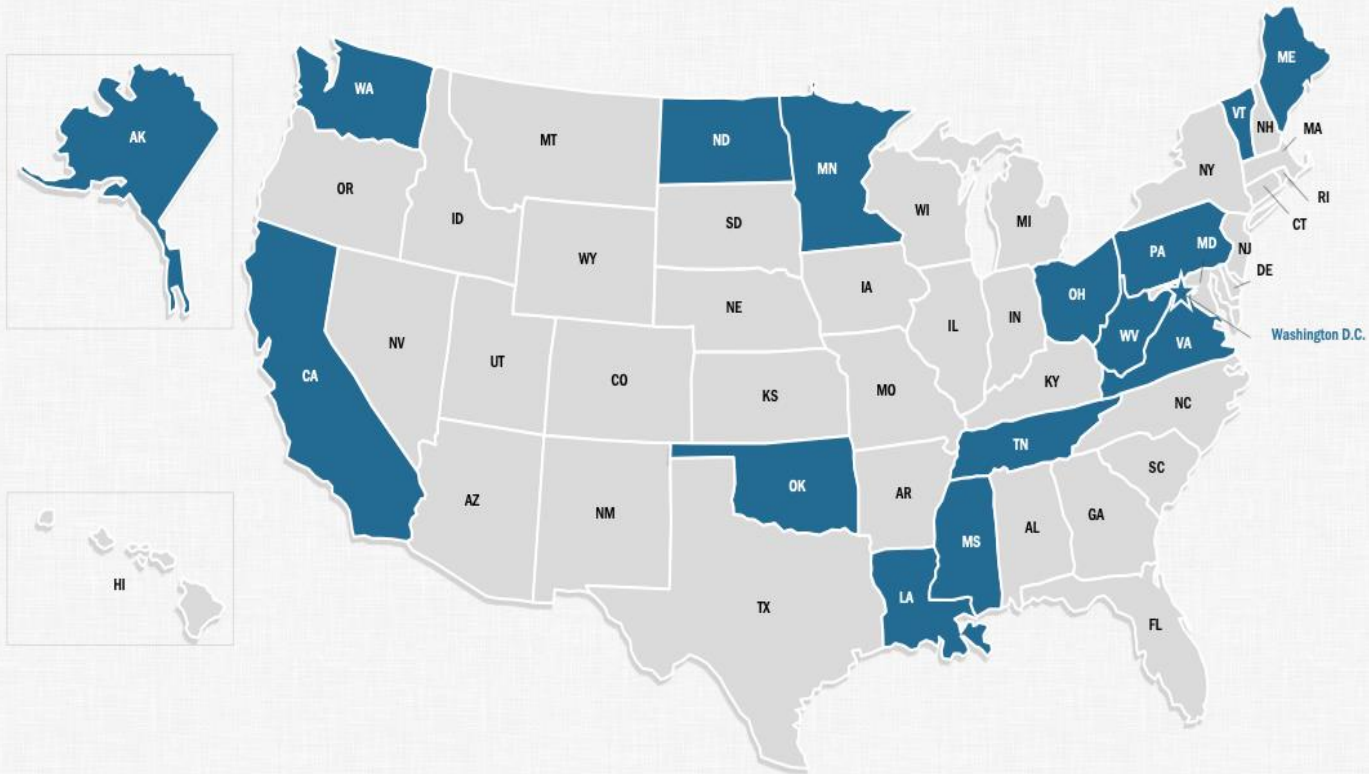


# SoLD Learning Cafe Series

<b>Learning Café 3   Pre-k-12 Whole Child:</b> Environments Full of Safety and Belonging <b>Teacher Preparation:</b> Development of Skills, Habits, and Mindsets of an Equitable Educator	
<a href="#">Learning Café 3a</a>	February 1   12:00 PM – 1:30 PM ET
<a href="#">Learning Café 3b</a>	February 3   3:00 PM – 4:30 PM ET
<b>Learning Café 4   Pre-k-12 Whole Child:</b> Rich Experiences and Knowledge Development <b>Teacher Preparation:</b> Rich, Experiential Learning Opportunities	
<a href="#">Learning Café 4a</a>	March 1, 12:00 PM – 1:30 PM ET
<a href="#">Learning Café 4b</a>	March 3, 3:00 PM – 4:30 PM ET
<b>Learning Café 5   Pre-k-12 Whole Child:</b> Development of skills, habits, and mindsets; <b>Teacher Preparation:</b> Pedagogical alignment and modeling	
<a href="#">Learning Café 5a</a>	April 26   12:00 PM – 1:30 PM ET
<a href="#">Learning Café 5b</a>	April 28   3:00 PM – 4:30 PM ET
<b>Learning Café 6   Pre-k-12 Whole Child:</b> Integrated Support Systems; <b>Teacher Preparation:</b> Curriculum Rooted in Deep Understanding of Learners, Learning, and Development	
<a href="#">Learning Café 6a</a>	May 17   12:00 PM – 1:30 PM ET
<a href="#">Learning Café 6b</a>	May 19   3:00 PM – 4:30 PM ET



# The Teacher Licensure Collaborative



# Building the Teacher Pipeline: Emerging Models for High-Quality Educator Preparation

**Linda Darling-Hammond**

---

*President and CEO*

Learning Policy Institute



# Panel Discussion



**Lynn M. Gangone**

*President and Chief  
Executive Officer*

American Association  
of Colleges for Teacher  
Education (AACTE)

@LynnMGangone | @AACTE



**Carole Basile**

*Dean*

Mary Lou Fulton  
Teachers College at  
Arizona State  
University

@asueducation

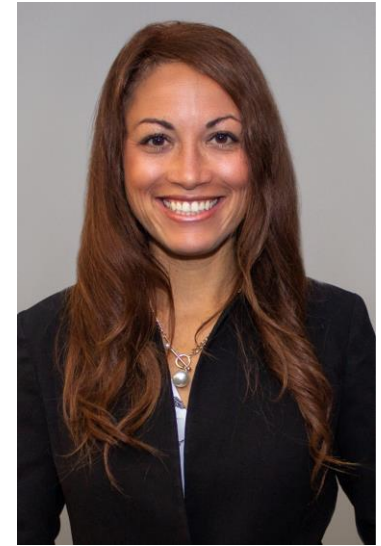


**Roberto J.  
Rodriguez**

*Assistant Secretary,  
Office of Planning,  
Evaluation and Policy  
Development*

U.S. Department of  
Education

@usedgov



**Penny Schwinn**

*Commissioner of  
Education*

Tennessee Department  
of Education

@SchwinnTeach | @tnedu

# Upcoming Events

<b>Learning Café 3   Pre-k-12 Whole Child:</b> Environments Full of Safety and Belonging <b>Teacher Preparation:</b> Development of Skills, Habits, and Mindsets of an Equitable Educator	
<a href="#">Learning Café 3a</a>	February 1   12:00 PM – 1:30 PM ET
<a href="#">Learning Café 3b</a>	February 3   3:00 PM – 4:30 PM ET
<b>Learning Café 4   Pre-k-12 Whole Child:</b> Rich Experiences and Knowledge Development <b>Teacher Preparation:</b> Rich, Experiential Learning Opportunities	
<a href="#">Learning Café 4a</a>	March 1, 12:00 PM – 1:30 PM ET
<a href="#">Learning Café 4b</a>	March 3, 3:00 PM – 4:30 PM ET
<b>Learning Café 5   Pre-k-12 Whole Child:</b> Development of skills, habits, and mindsets; <b>Teacher Preparation:</b> Pedagogical alignment and modeling	
<a href="#">Learning Café 5a</a>	April 26   12:00 PM – 1:30 PM ET
<a href="#">Learning Café 5b</a>	April 28   3:00 PM – 4:30 PM ET
<b>Learning Café 6   Pre-k-12 Whole Child:</b> Integrated Support Systems; <b>Teacher Preparation:</b> Curriculum Rooted in Deep Understanding of Learners, Learning, and Development	
<a href="#">Learning Café 6a</a>	May 17   12:00 PM – 1:30 PM ET
<a href="#">Learning Café 6b</a>	May 19   3:00 PM – 4:30 PM ET

# Thank You

**EdPrepLab**

[edpreplab.org](http://edpreplab.org)

**Learning Policy Institute**

[learningpolicyinstitute.org](http://learningpolicyinstitute.org)

**Bank Street Graduate School of Education**

[graduate.bankstreet.edu](http://graduate.bankstreet.edu)

**Stay Informed**

Twitter

@LPI\_Learning

@bankstreetedu

Email

[bit.ly/LPIupdates](https://bit.ly/LPIupdates)

The Educator Preparation Laboratory is supported by the Carnegie Corporation of New York, the William & Flora Hewlett Foundation, and the W. Clement and Jessie V. Stone Foundation.